

# BConnect

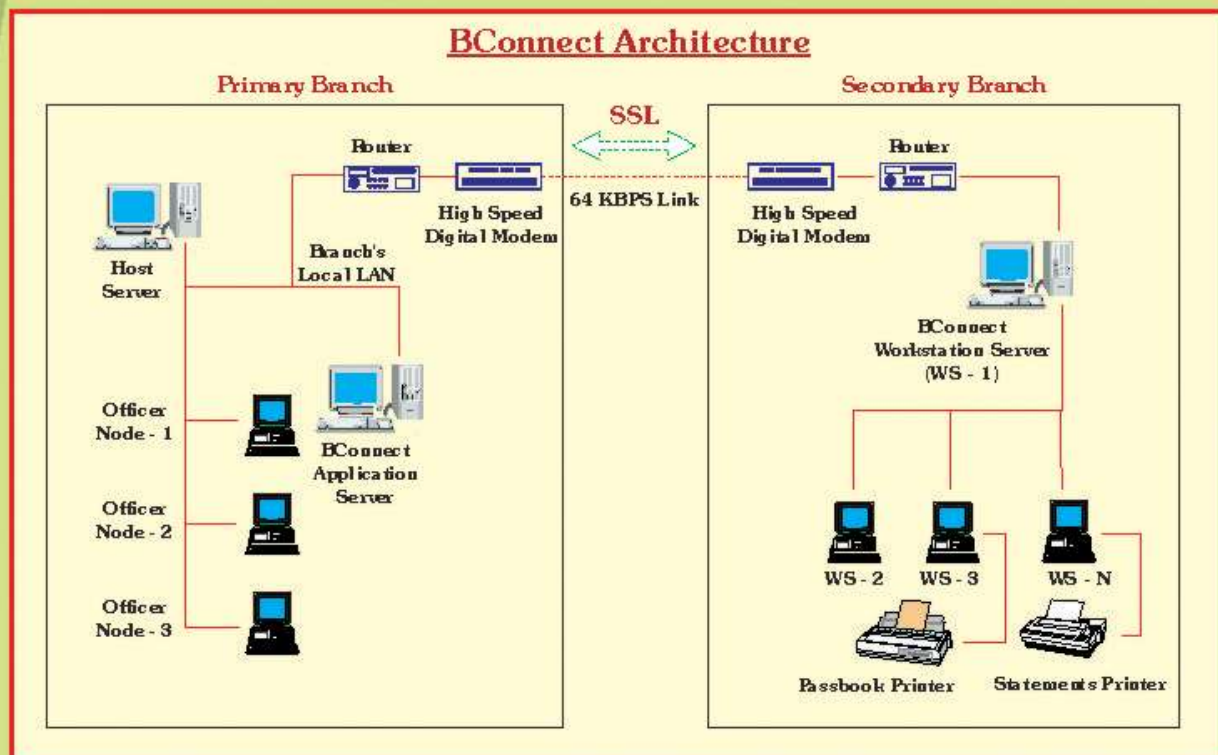
## Salient Features

- \* For LAN applications in split premises, BConnect replaces the need of high cost, high bandwidth communication channels with cost effective, low bandwidth, easily available communication channel
- \* The connection between the Primary Branch and the Secondary Branch can be via single leased line or Analog dial-up link or ISDN
- \* Login facility from the remote Secondary Branch Terminals to the Banking Software Server in the Primary Branch
- \* All Account related operations can be performed from Remote Terminals
- \* The time taken to do an operation in Secondary Branch is same as time taken in the Primary Branch terminal
- \* Multiple Terminals can be connected at the Secondary Branch
- \* SSL based Secure Data Transfer
- \* Remote Processing
- \* Cost Effective
- \* Easy Installation & Maintenance
- \* It can be enhanced to support multiple Secondary Branches
- \* Avoids Physical transport of data from Secondary Branch to Primary Branch

The Solution provides online connectivity between Secondary Branch and Primary Branch. Secondary Branch is physically separated from the Primary Branch but it is dependent on the Primary Branch for all operations. Presently, as there is no connectivity between the Secondary Branch and the Primary Branch, all operations at the Secondary Branch are done manually and later posted in the Primary Branch Server.

With the proposed system it is possible to access Banking Software which is running in the Primary Branch from Secondary Branch. Bconnect Application Server (BAS) is located at Primary Branch and is on the LAN of the Banking Software.

Bconnect Workstation Server (BWS) at Secondary Branch provides connectivity to the BAS in Primary Branch through a single leased line or dial-up link or ISDN line. BWS also manages the diskless nodes in the Secondary Branch LAN. Through the diskless nodes at the remote Secondary Branch, Bank Officers can login to the Banking Software at the Primary Branch. It is possible to post transactions and do all the required operations like Demand Draft Printing, Pass Book Printing etc. directly from Secondary Branch terminals.



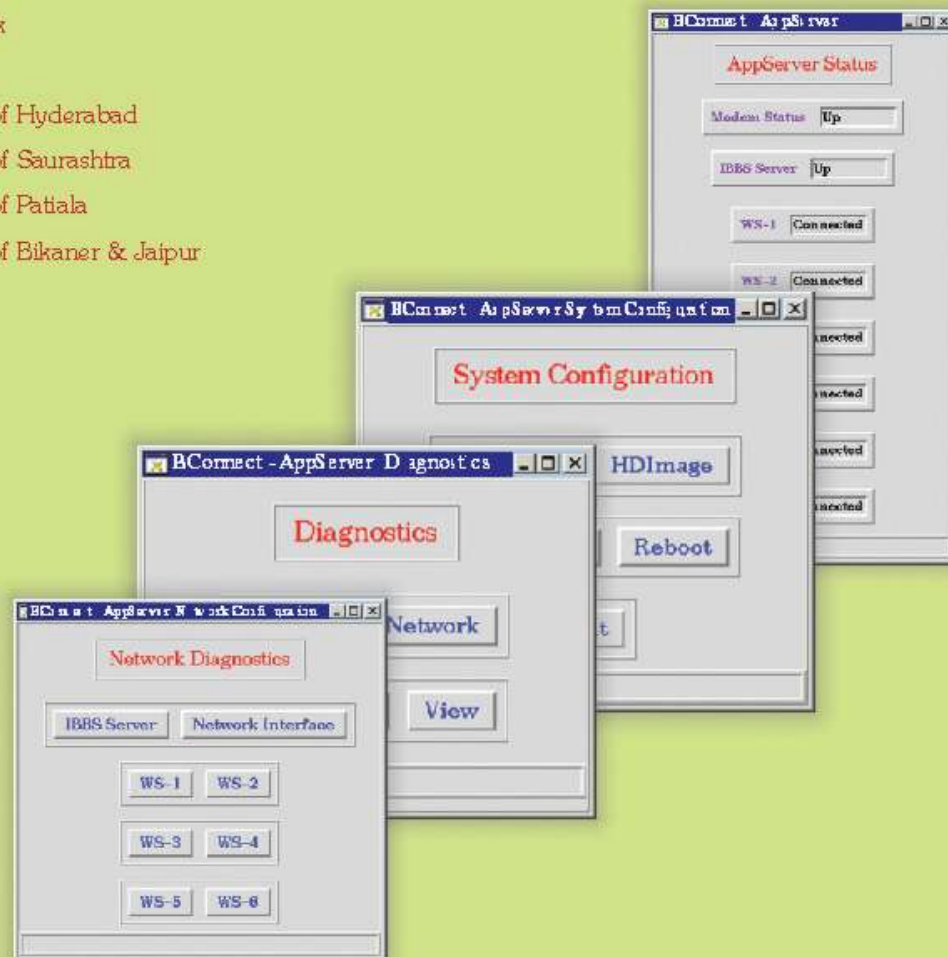
## Representative List of Services

- \* Posting Transactions
- \* Demand Draft Printing
- \* Passbook Printing
- \* Funds Transfer
- \* Periodic Statement
- \* Deposits

## Representative List of Clients using our connectivity solutions

- \* State Bank of India
- \* Canara Bank
- \* Dena Bank
- \* State Bank of Hyderabad
- \* State Bank of Saurashtra
- \* State Bank of Patiala
- \* State Bank of Bikaner & Jaipur

As shown in the Architecture diagram, BConnect Application Server is connected to the Banking Software just as yet another Banking node. In the entire scheme, BConnect, only transports user interfaces. BConnect, by itself, does not access the database of the Banking Software directly. Therefore all the business logic, checks and balances provided by the Banking Software is fully honoured.



## **bk SYSTEMS (P) Ltd**

10, Third Cross, Seethammal Extn., Alwarpet, Chennai - 600 018. India

Ph: +91 44 24342791 Fax: +91 44 24347428

Email: [bconnect@bksystems.co.in](mailto:bconnect@bksystems.co.in) Website: [www.bksystems.co.in](http://www.bksystems.co.in)